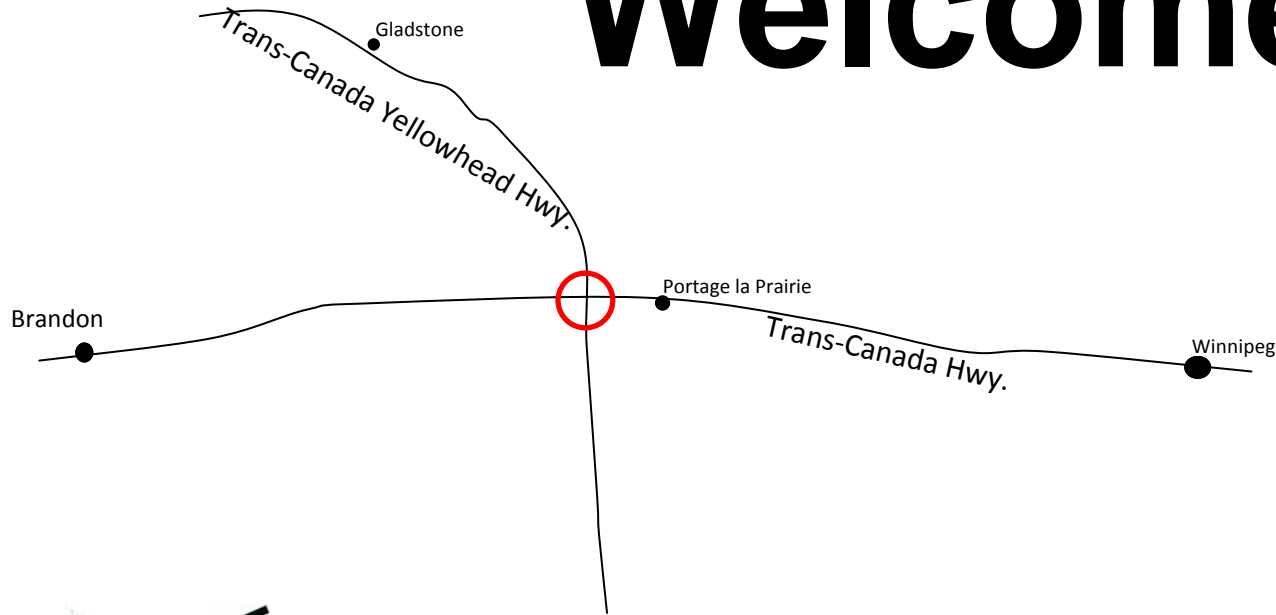


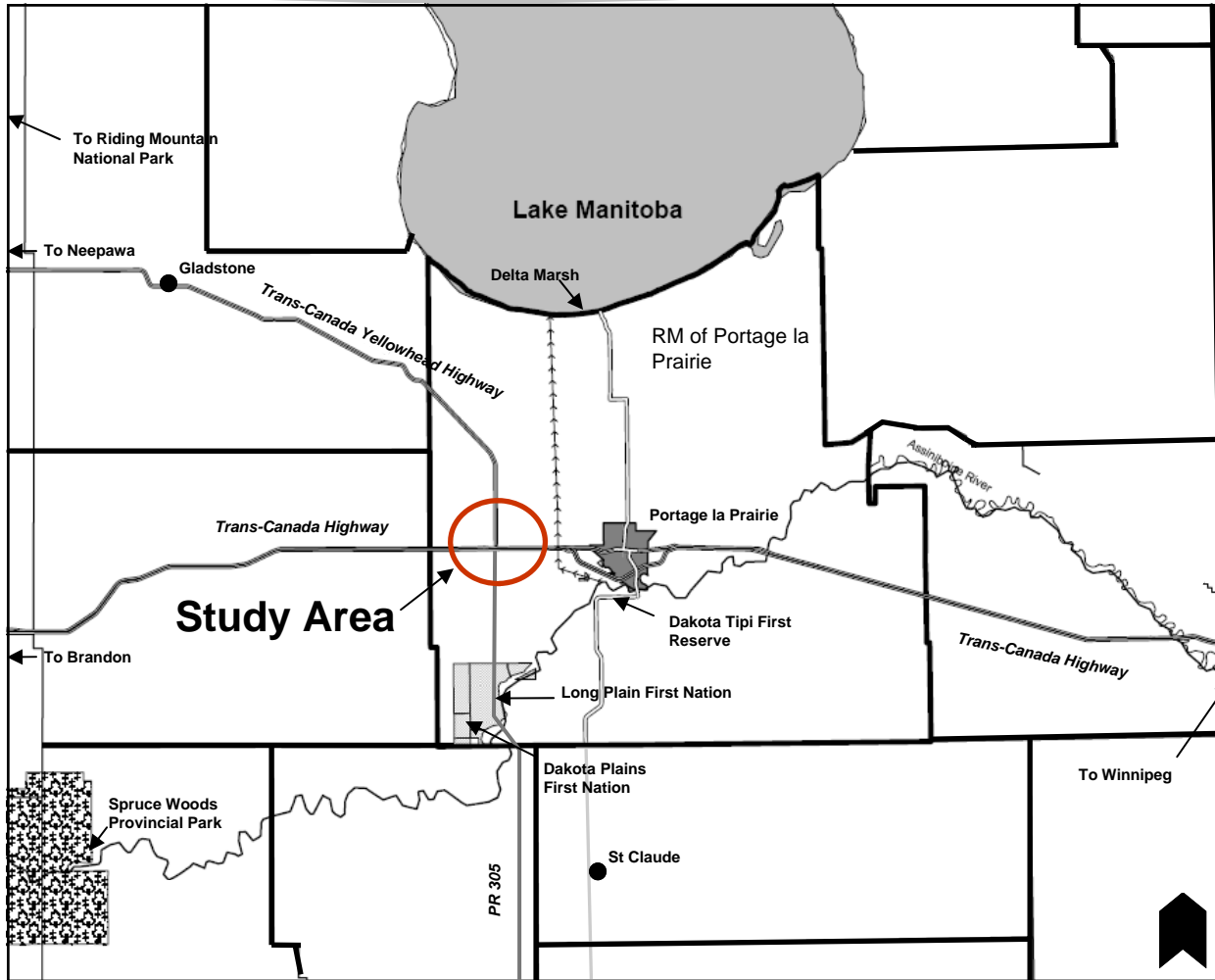
PTH 1 (TRANS-CANADA HWY.) & PTH 16 (TRANS-CANADA YELLOWHEAD HWY.) INTERCHANGE

Welcome



Public Open House

CONTEXT



Location:

Intersection of Highway 1 (Trans-Canada Highway) and Highway 16 (Trans-Canada Yellowhead Highway)

Project Rationale:

The purpose of this project is to improve **safety** and **traffic flow** by replacing the at grade, signalized intersection of Highway 1 and Highway 16 with an overpass system (interchange)

PROJECT OBJECTIVES

- Meeting transportation demand for the next 20 years+
- Replace aging bridges and culvert structures
- Design the bridges for a 75 year lifespan
- Provide land owners with safe access to all the highways through the use of service roads
- Maintain traffic connections with Provincial Road 305
- Replace at-grade crossings of CN mainline at Highway 16 with an overpass
- Maintain an at-grade crossing of the CP mainline on Provincial Road 305

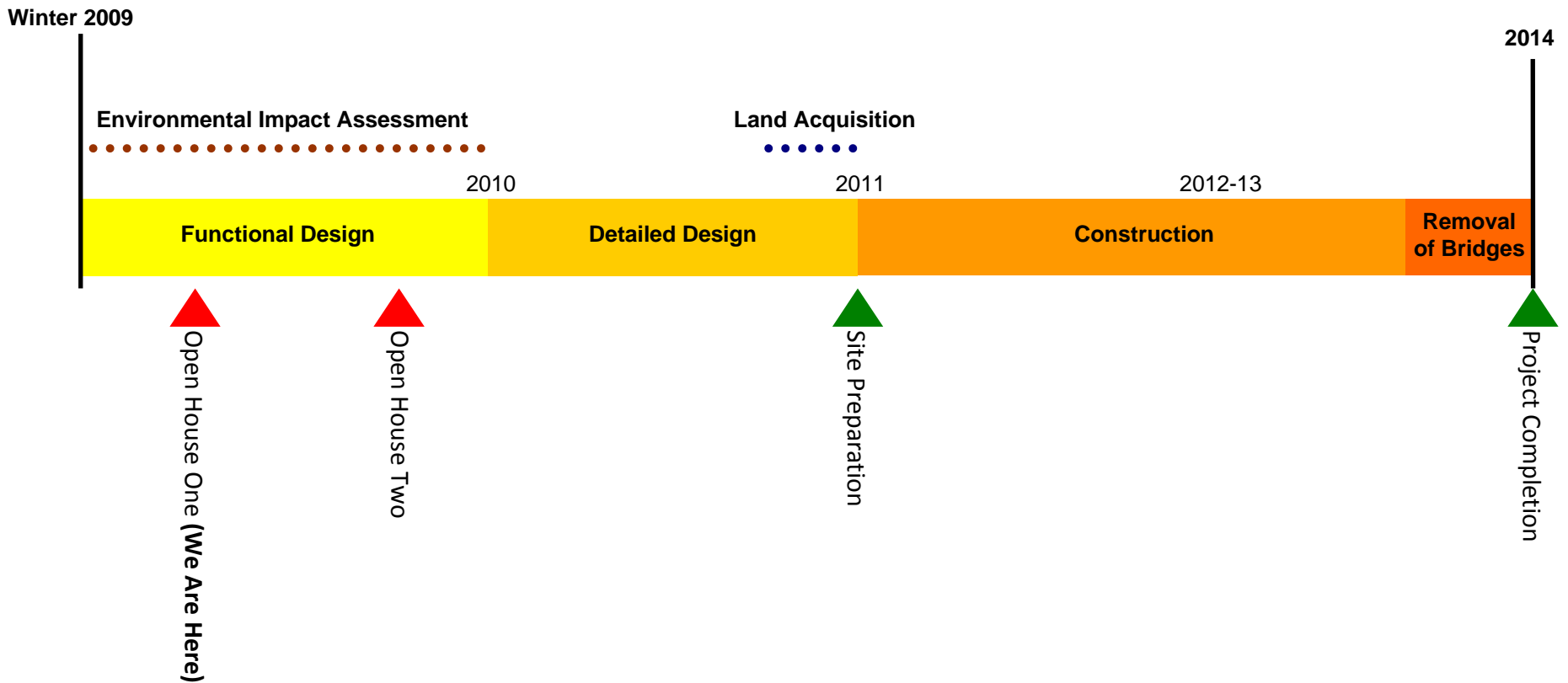
PROJECT OVERVIEW

Project Components

- Construction of an elevated interchange to replace the at-grade signalized intersection
- Realignment of Highway 1 and Highway 16/Provincial Road 305 and associated service roads
- Construction of ten new structures:
 - Two bridges on Highway 1 over Rat Creek
 - Two bridges on Highway 16 over Rat creek
 - Two new overpass structures at Highway 16 over Highway 1
 - Two new overpass structures on Highway 16 over the CNR tracks
 - Two new bridges on the Highway 1 service road



PROJECT TIMELINE



STREAM CROSSINGS CONSIDERATIONS



- Design of stream crossings to minimize impact on fish and wildlife habitat
- Allow for the passage of small boats

What's Next?

Your Input will be Factored into the Evaluation of the Alternatives.

Factors to be considered:

COMMUNITY IMPACTS

- Heritage and Cultural Resources
- Residential and Commercial Land and Buildings
- Agricultural Land
- Agricultural Land Partitioning and Connectivity
- Convenience/Access
- Buildings within 100 metres
- Future Development

ENGINEERING FACTORS

- Interchange Level of Service
- Accommodate Traffic to and from Highway 1/ Highway 16/ Provincial Road 305
- Interchange Geometrics
- Traffic Safety
- Traffic Disruption during Construction
- Detour Requirements
- Railway Crossing Impacts

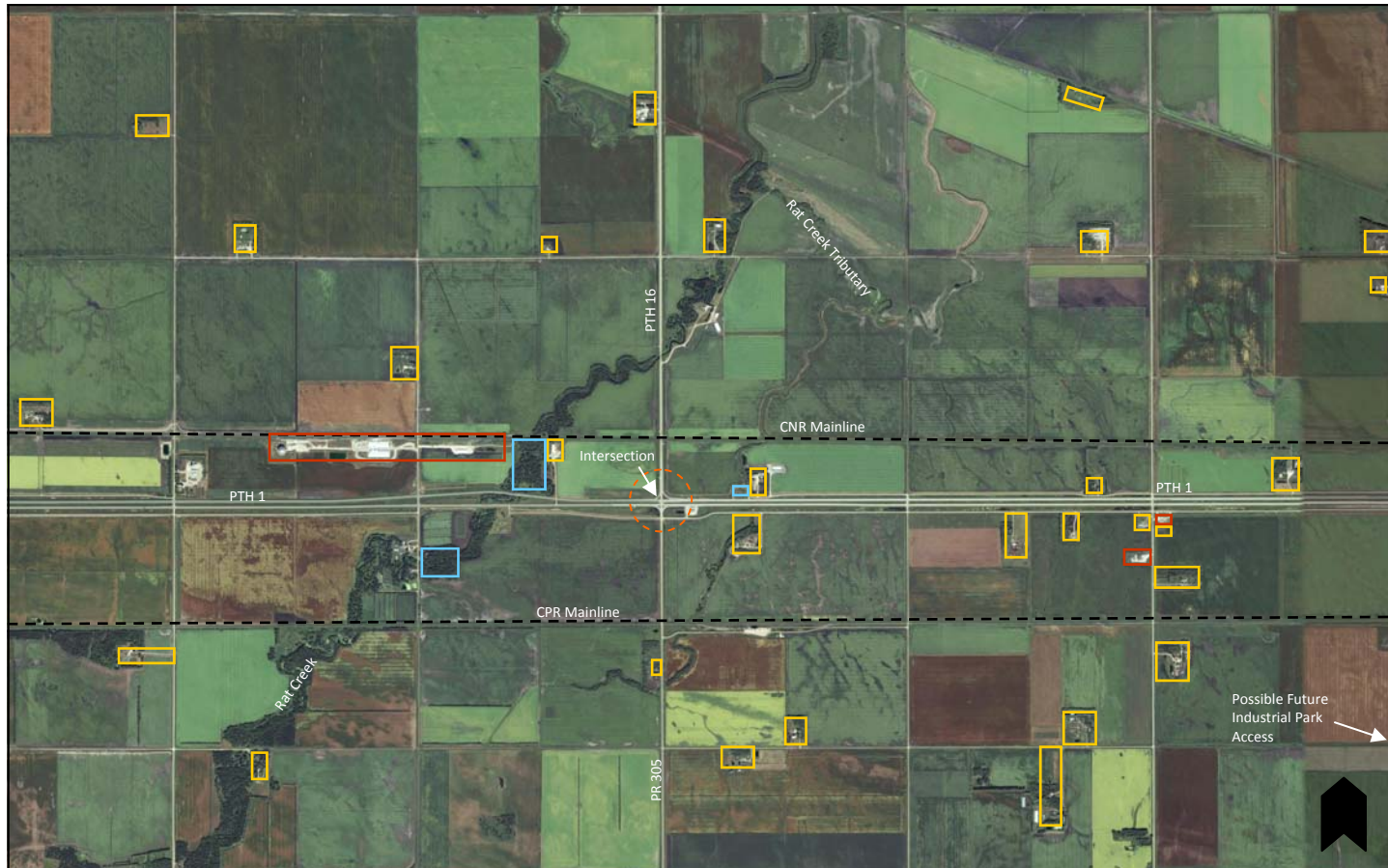
ENVIRONMENTAL IMPACTS




- Air Quality
- Vegetation and Wildlife
- Noise
- Species of Interest
- Drainage
- Waterbodies

COST FACTORS

- Construction Cost
- Right-of-Way Acquisition Cost
- Utility Relocation Cost

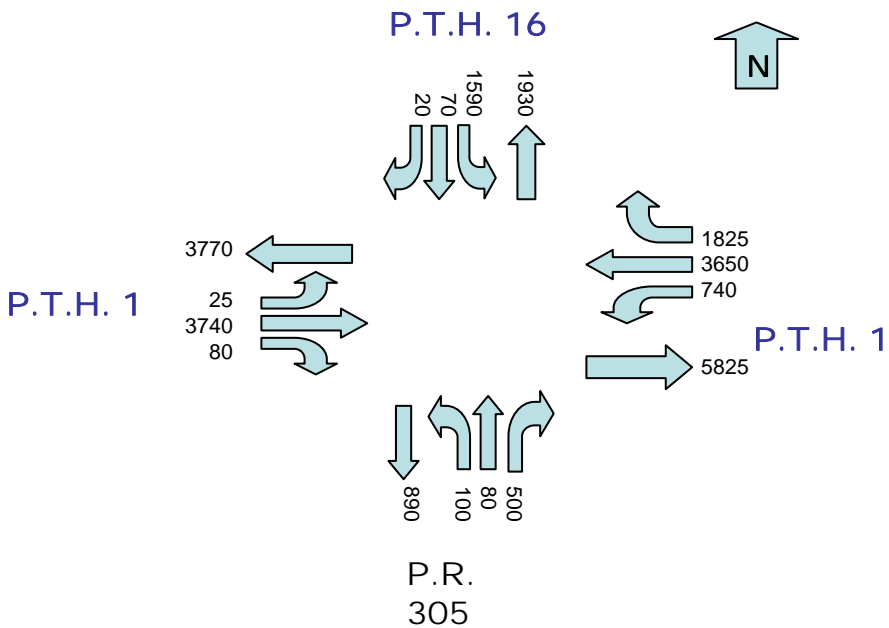
Identified Constraints in the Project Area



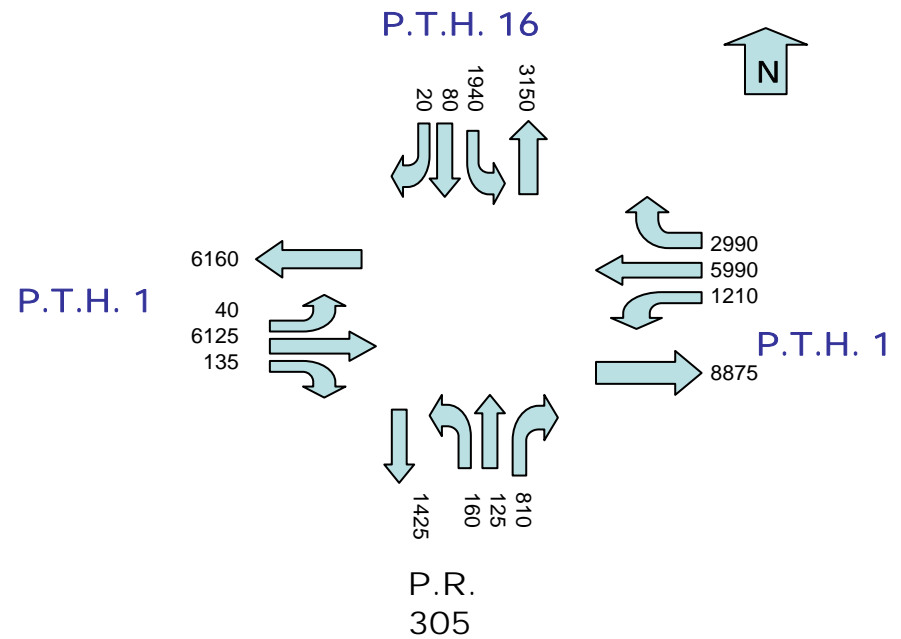
-  Commercial Business
-  Residential
-  Culturally or Environmentally Sensitive Location

Traffic Volumes

2008 Average Daily Traffic



2028 Average Daily Traffic



Your Input

**Thanks for your time and
participation**

Please fill out the survey